

*isa*

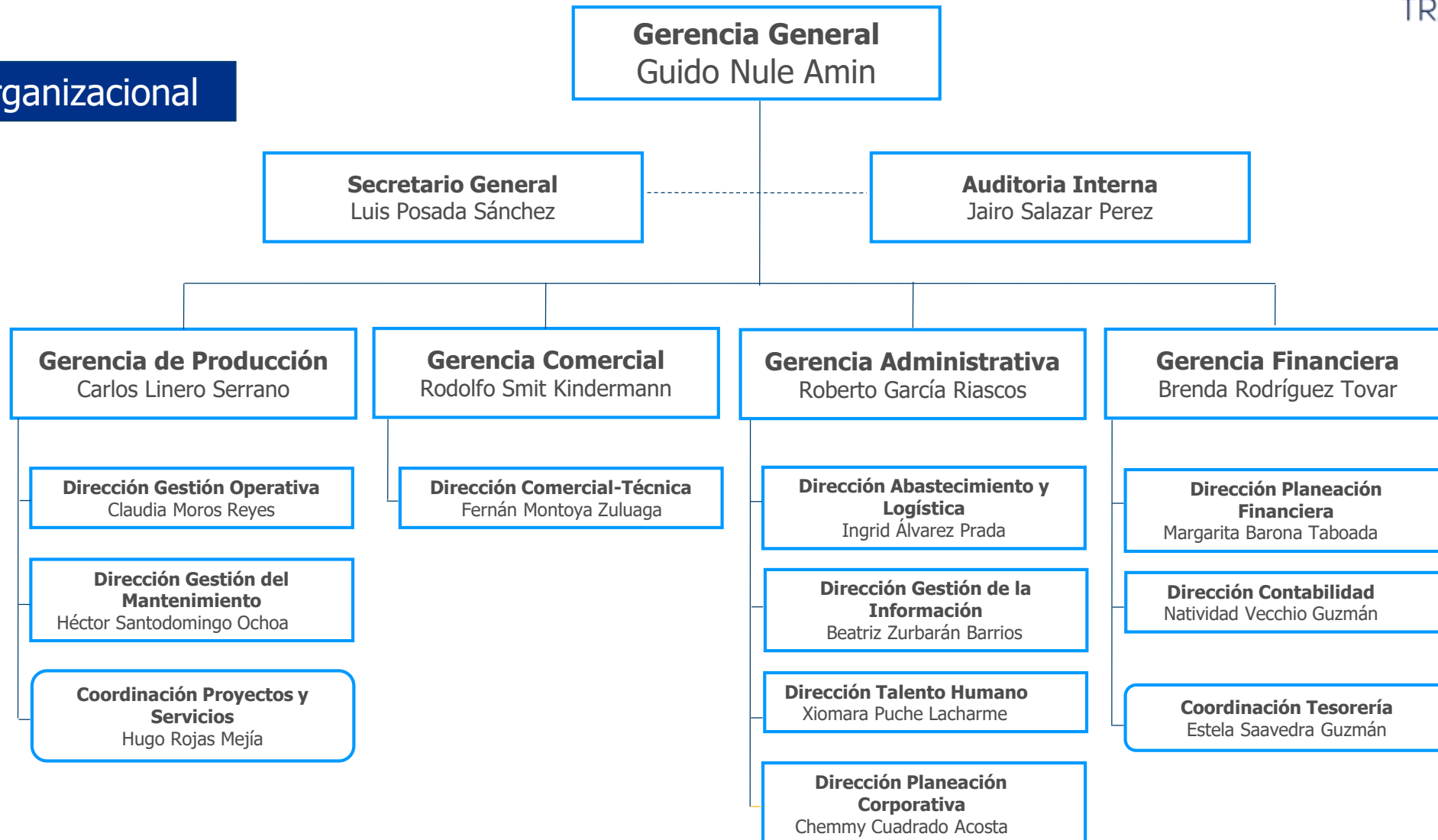
TRANSELCA

# **Estructura Organizacional**

Enero de 2018

# Nuestro equipo humano

## Estructura Organizacional



A man in a light-colored shirt and dark pants stands with his arms raised in a landscape, possibly a field or a park, under a clear sky. The image is overlaid with a blue gradient.

*isa*

TRANSELCA

**TRANSELCA S.A. E.S.P.**  
NIT: 802.007.669-8

Carrera 24 No. 1A-24 P.18  
Puerto Colombia, Atlántico, Colombia  
Tel: + 57 5 3717200

Fax: + 57 5 3717385  
Cod. Postal: 081007

[www.transelca.com.co](http://www.transelca.com.co)